

Poisons - Food Items

Everyday foods that are around your house that are toxic to your pets



Alcohol	Hops, yeast	Seizures, respiratory failure
Apple Seeds	Release cyanide during digestion	Inadequate oxygen levels causing shock and death
Apricots - seeds, leaves and stems	Cyanide	Inadequate oxygen levels causing shock and death
Artificial Sweetener	Xylitol	Liver failure
Avocado	Persin	Liver and kidney failure
Bread Dough - fermentation process and potential swelling causing bloat	Yeast	Bloat, twisted stomach, seizures, respiratory failure
Chewing Gum	Xylitol	Liver failure
Chives, Leeks	Allium family	Vomiting, diarrhoea, abdominal pain, collapse
Chocolate	Theobromine & caffeine	Vomiting, diarrhoea, seizure, coma, death
Coffee	Caffeine	Vomiting, seizures, collapse, death
Currants	Unknown	Acute kidney failure
Garlic - 5 x more potent than onion	Allium family	Vomiting, diarrhoea, abdominal pain, collapse
Grapes	Unknown	Acute kidney failure
Macadamia Nuts	Unknown	Nerve function causing hind limb paralysis
Mouldy Food	Mycotoxins	Vomiting, agitation, seizures
Mushrooms	Depending on which species	Hallucinogenic, vomiting, diarrhoea, seizures, liver failure, kidney failure
Onions	Allium family	Vomiting, diarrhoea, abdominal pain, collapse
Peach Pits	Cyanide	Inadequate oxygen levels causing shock and death
Play Dough - homemade	Salt	Kidney damage, seizures, coma, death
Potatoes - green peel and sprouts	Solanine	Neurological damage
Raisins	Unknown	Acute kidney failure
Rhubarb leaves	Calcium oxalates	Vomiting, diarrhoea, tremors, bloody urine
Salt	Salt poisoning	Kidney damage, seizures, coma, death

**If your animal has swallowed any poisons
GET THE ANIMAL TO THE NEAREST VET**

NATIONAL POISON CENTRE - 0800 POISON (0800 764 766)

Funded to work with humans but will assist with animal poisons as required



Poisons - Household Items

Everyday products that are around your house and in your garage that are toxic to your pets



Acids - battery fluid, cleaning products, drain cleaners, vinegar	Caustic	Perforation of the intestines, severe tissue damage
Alkalis - bleach, dishwashing detergent, oven cleaner, cement	Caustic	Perforation of the intestines, severe tissue damage
Antifreeze	Ethylene glycol	Coma, kidney failure, death
Aspirin	Acetylsalicylic acid	Collapse, weakness, seizures, death
Asthma Drugs	Beta-agonist, steroids	Elevated heart rate, agitation, vomiting, collapse and death
Batteries	Alkaline and acidic	Severe corrosive injury
Detergents - fabric softeners, cleaners	Corrosive injury	Burns, vomiting, breathing difficulty
Gasoline	Petroleum	Skin irritation, vomiting, breathing difficulty, coma
Hand Sanitisers	Ethanol	Vomiting, collapse, coma, death
Heart Medication	Warfarin	Bloody vomitus, bloody diarrhoea, haemorrhaging, breathing difficulty, death
Ibuprophen	Non-steroidal anti-inflammatory drugs	Bloody vomitus, anaemia, kidney failure, seizures, death
Kerosene	Hydrocarbons	Skin irritation, vomiting, breathing difficulty, coma
Matches	Potassium nitrate	Vomiting, bloody diarrhoea, seizures, kidney failure, jaundice
Mothballs	PDB	Organ failure, coma, death
Paint	Volatile organic compounds	Vomiting, diarrhoea, seizures, unconsciousness
Pine Oil	Essential oil	Retching, vomiting, diarrhoea, abdominal pain, coma
Penny Royal Oil	Essential oil	Liver failure
Rat/Mouse Poison	Anticoagulants, cholecalciferol, gromethalin, phosphide rodenticides	Acute kidney failure, cerebral oedema, coma, death
Tobacco	Nicotine + 13,000 other chemicals	Uncontrolled urination defecation, tremors, seizures, paralysis, death
Tea Tree Oil	Essential oil	Inability to walk, tremors, coma, liver failure, death
Toothpaste - including mouthwash	Fluoride, hydrofluoric acid, xylitol	Vomiting, kidney damage

**If your animal has swallowed any poisons
GET THE ANIMAL TO THE NEAREST VET**

NATIONAL POISON CENTRE - 0800 POISON (0800 764 766)
Funded to work with humans but will assist with animal poisons as required

Poisons - Plants

Everyday plants that are in your garden that are toxic to your pets

Aloe Vera

Vomiting, diarrhoea, depression, anorexia, tremors



Azalea - Rhododendron

Vomiting, diarrhoea, pain, tremors, blindness, seizures, coma



Belladonna

Elevated heart rate, respiratory failure, hallucinations



Blue Green

Algae Vomiting, diarrhoea, black tarry stool, jaundice, seizures, coma, death



Chrysanthemum

Vomiting, diarrhoea, inappetance



Cherry

All parts of the plant except for the ripe fruit. Vomiting, diarrhoea, ulceration, seizures



Daffodils Vomiting, diarrhoea, pain, abnormal breathing, cardiac arrhythmias

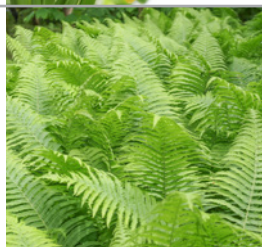


Daphne

Ulceration, drooling, vomiting, bloody diarrhoea, coma, death



Fern - Asparagus Vomiting, diarrhoea, pain, dermatitis



Fox Glove

Drooling, vomiting, collapse, tremors, seizures, death



Geranium

Vomiting, anorexia, depression, dermatitis



Horse Chestnut

Drooling, vomiting, dilated pupils, coma, convulsions



Hyacinth Bulbs

Vomiting, diarrhoea, dermatitis



Hydrangea

Lethargy, vomiting, diarrhoea



**If your animal has swallowed any poisons
GET THE ANIMAL TO THE NEAREST VET**

NATIONAL POISON CENTRE - 0800 POISON (0800 764 766)

Funded to work with humans but will assist with animal poisons as required



PET First Aid & Training (NZ)

www.pelfat.co.nz
info@pelfat.co.nz
0508 PET FIRST

Poisons - Plants

Everyday plants that are in your garden that are toxic to your pets

Iris

Drooling, vomiting, diarrhoea



Karaka Berry

Vomiting, diarrhoea, limb stiffness, seizures, death



Lilly - Arum, Easter, Lilly of the Valley, Peace, Tiger - Drooling, vomiting, collapse, tremors, seizures, death



Milkweed

Drooling, vomiting, collapse, tremors, seizures, death



Morning Glory

Incoordination, diarrhoea, liver failure



Mushroom - Wild

Bloody diarrhoea, vomiting, abdominal pain



Oleander

Drooling, vomiting, collapse, tremors, seizures, death



Poinsettia Drooling, dermal irritation, vomiting, diarrhoea



Poppy Inappetance, sedation, slowed breathing and heart rate, coma



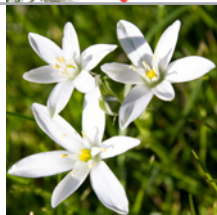
Rubber Tree - Cats

Vomiting, loss of coordination, depression



Star of Bethlehem

Drooling, vomiting, collapse, tremors, seizures, death

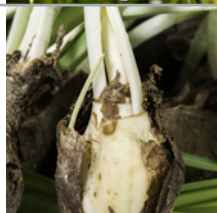


Stinging Nettle

Swallowed and contact irritation



Tulip Bulbs Vomiting, diarrhoea, difficulty breathing



Wisteria

Vomiting (sometimes bloody), diarrhoea, depression



Yesterday, Today and Tomorrow

Vomiting, diarrhoea, drooling, tremors, seizures



Yucca

Vomiting, diarrhoea, liver disease



**If your animal has swallowed any poisons
GET THE ANIMAL TO THE NEAREST VET**

NATIONAL POISON CENTRE - 0800 POISON (0800 764 766)

Funded to work with humans but will assist with animal poisons as required



PET First Aid & Training (NZ)

www.petfat.co.nz
info@petfat.co.nz
0508 PET FIRST